

June 21, 1886.

012005

Providence R.I.
This plat accompanies
our report of this date.

PLAT OF EDDY STREET

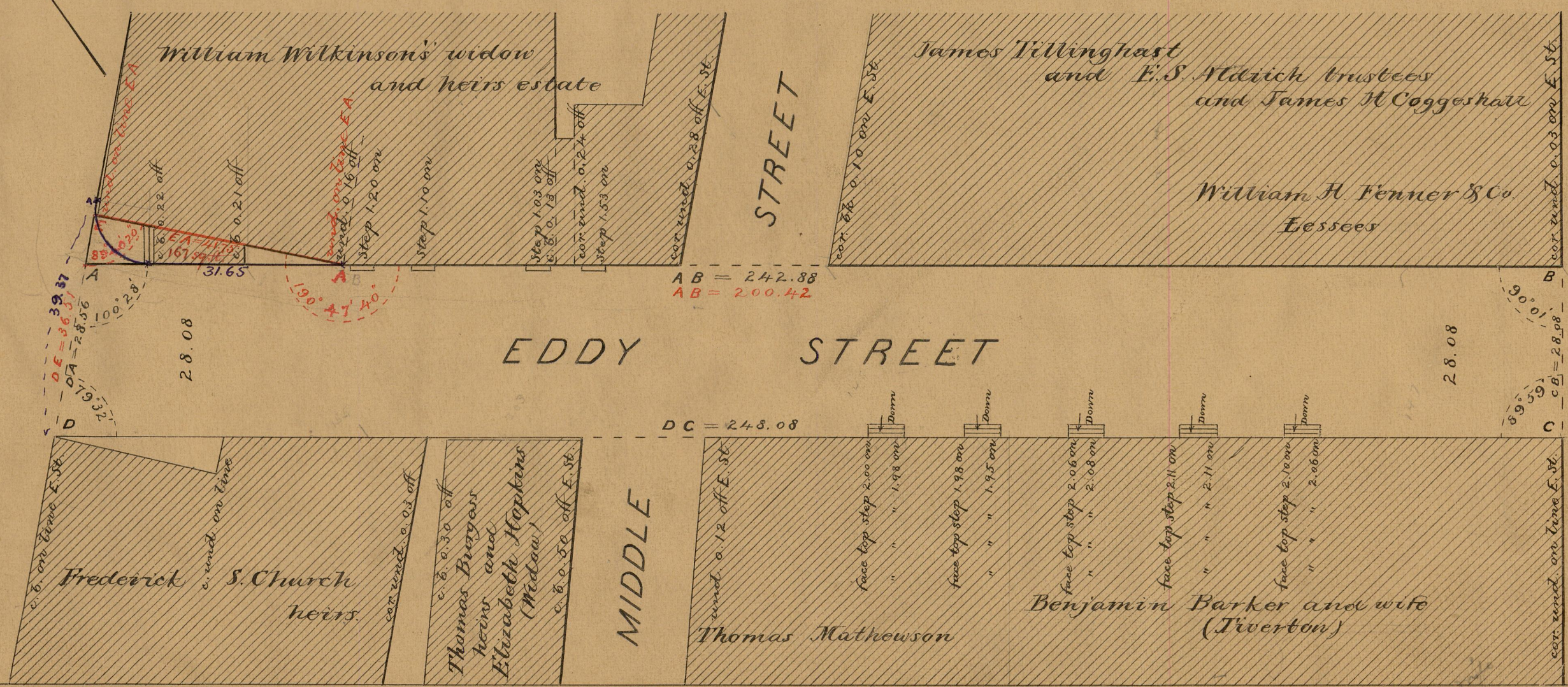
FROM WESTMINSTER ST. TO BROAD ST.

SCALE 20 FEET PER INCH.

Committee appointed to lay out May 20, 1886.
Report was filed Feb. 17, 1887 bounding layout by lines ABCDEA
Recommended Mar. 17, 1887 referred to May 19, Sept. 15, and Dec 15, 1887
Amended plan (see purple lines and figures) rejected Dec. 15,
*Committee could not agree with Wm. Wilkinson's
widow and heirs*

200 242.88
 248.08
 2490.96
 245.48

WESTMINSTER ST.



BROAD STREET
St.
Weybosset

OFFICE No. 8958
DRAWER " 83
SHEET " A-30

83
A-30